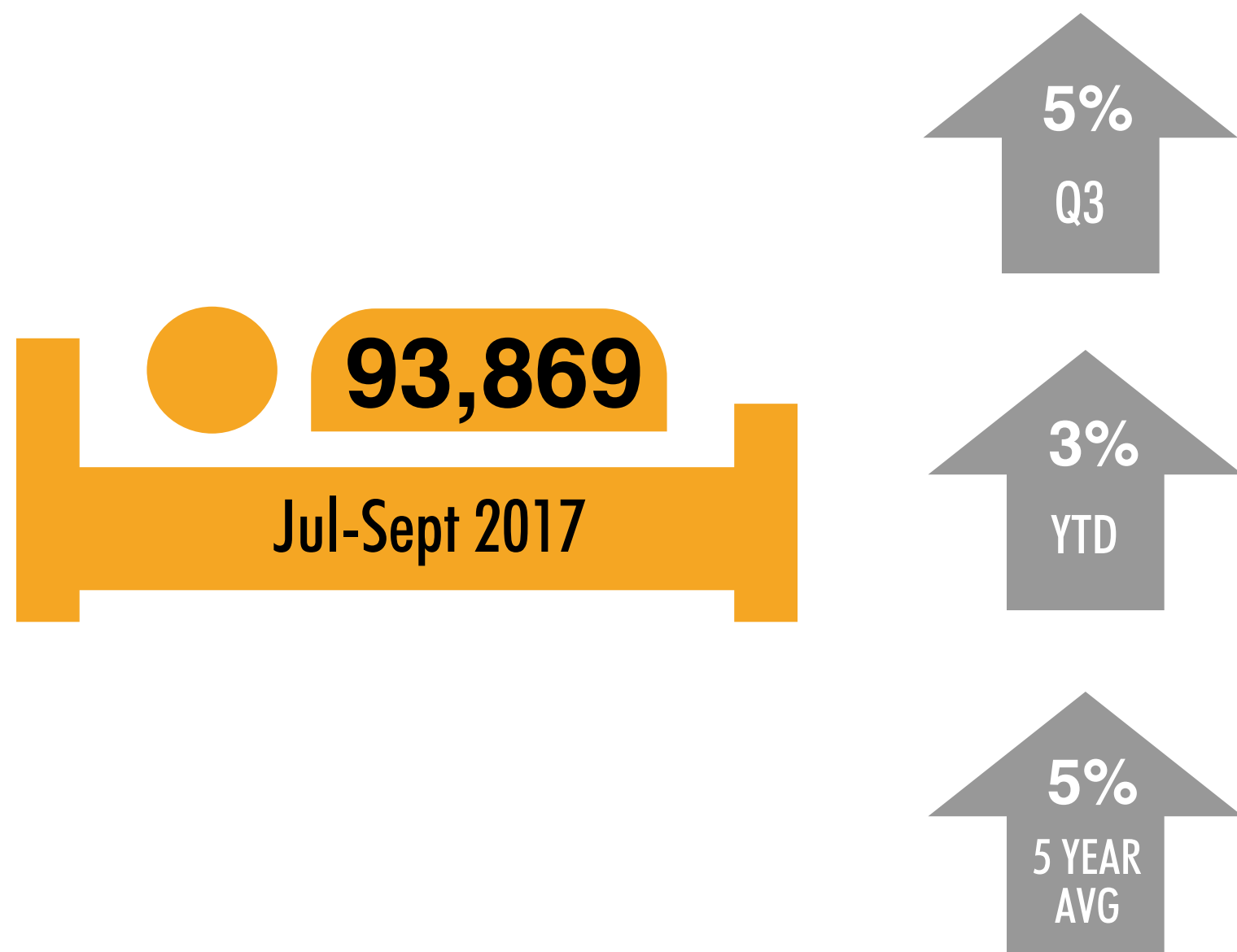
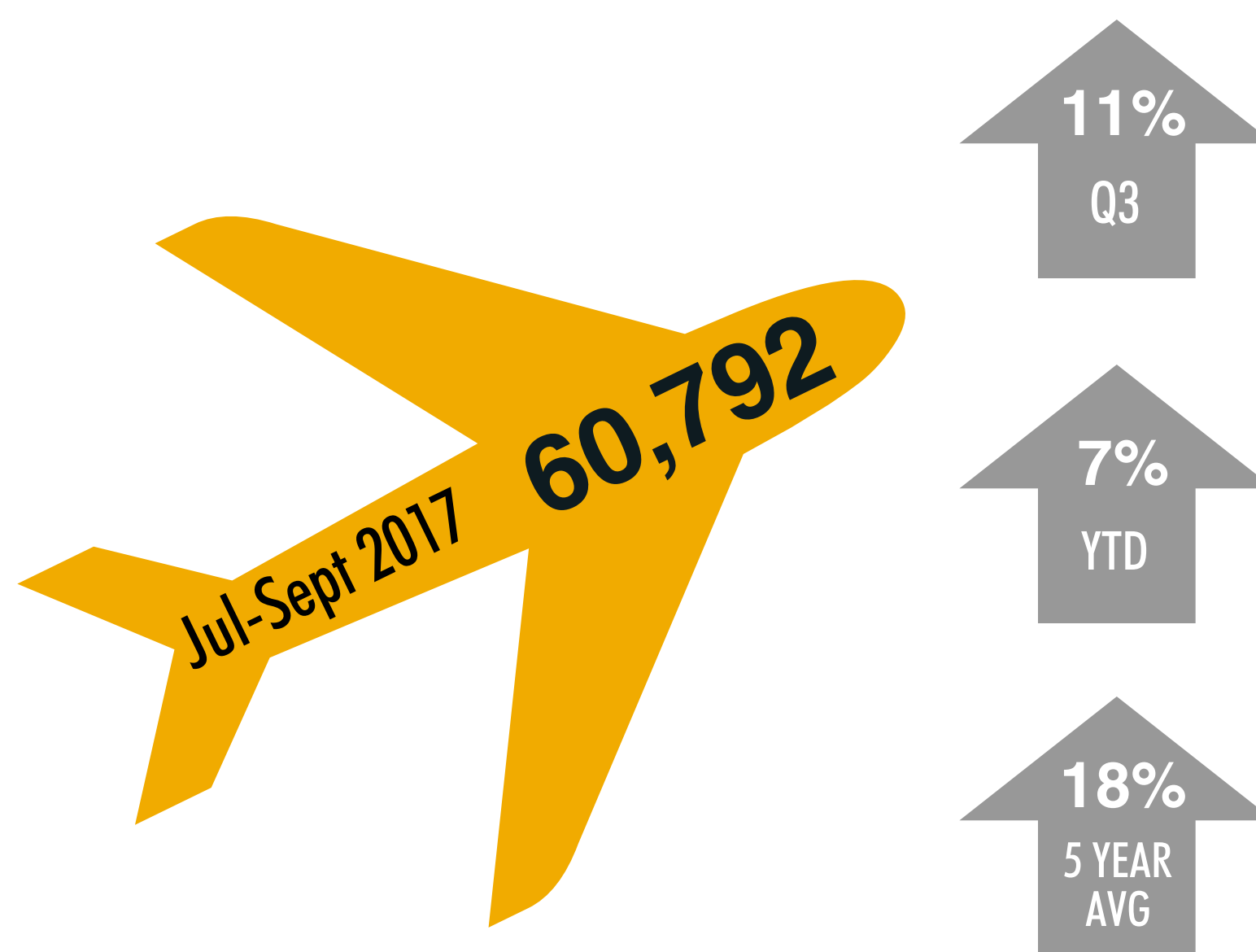


Q3 HIGHLIGHTS: JUL - SEPT 2017

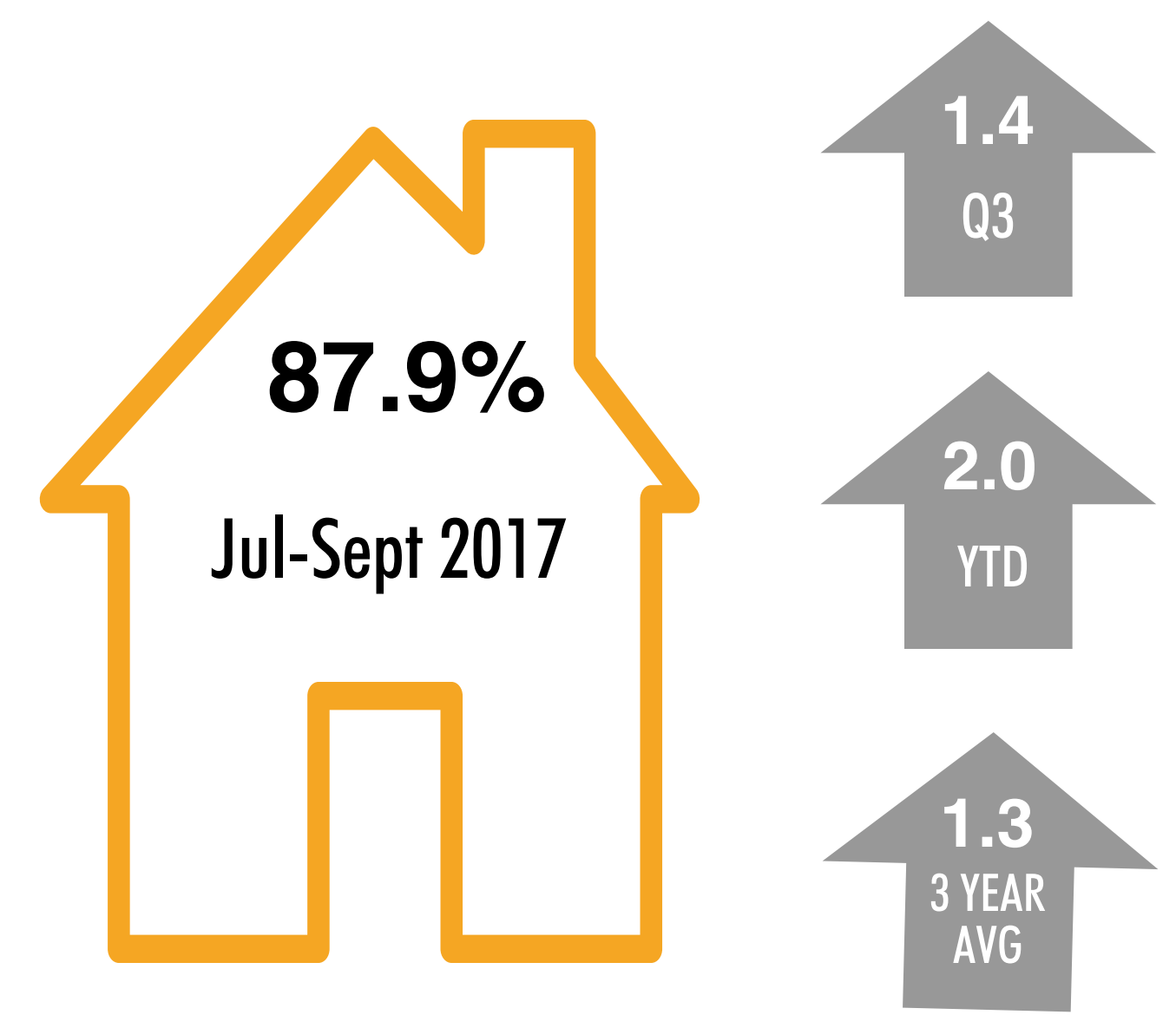
International Overnight Visitation (1+ Nights)



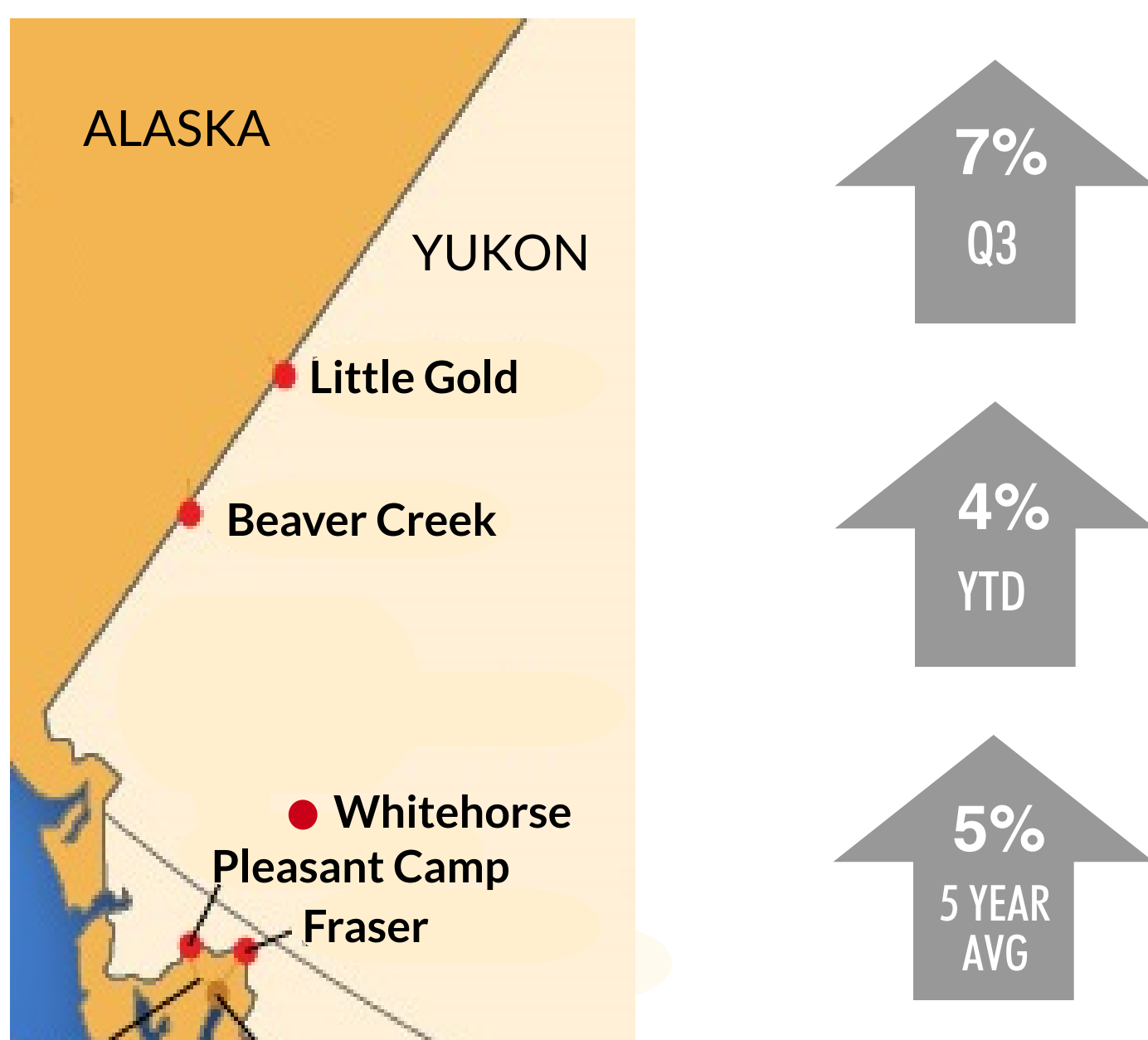
Air Arrivals at Erik Nielson Whitehorse International Airport



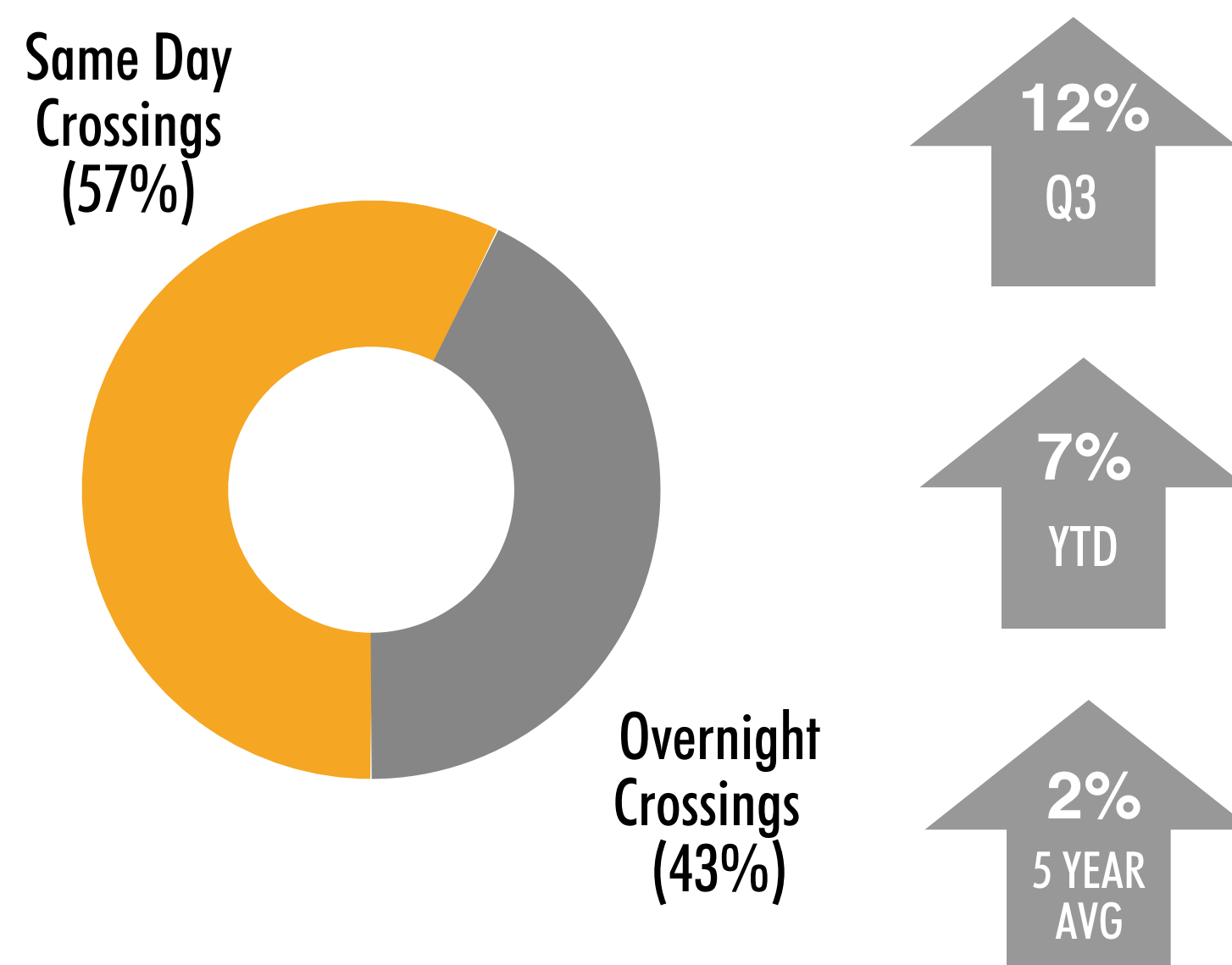
Occupancy at Select Fixed Roof Accommodations



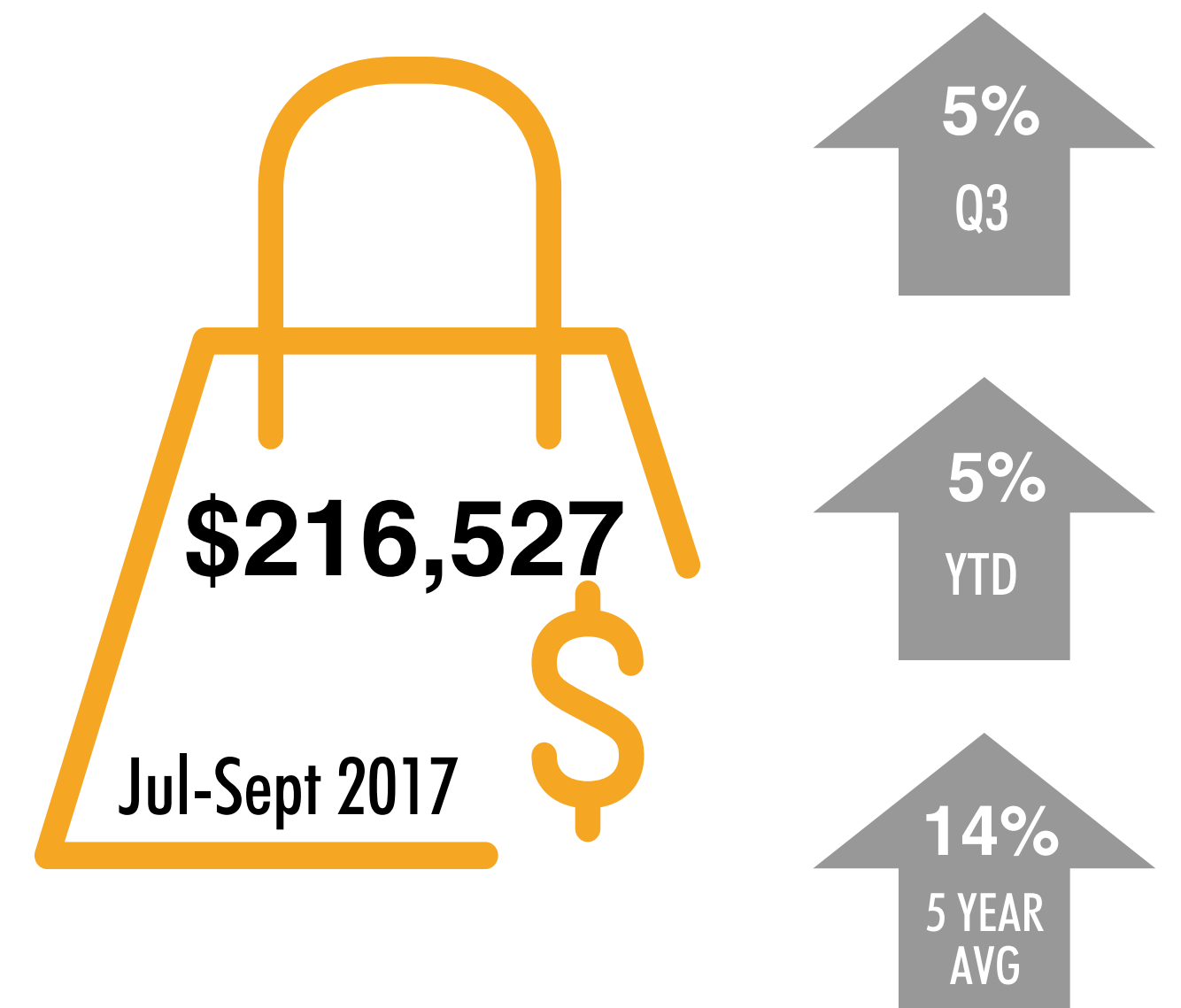
International Border Crossings (Into Yukon)



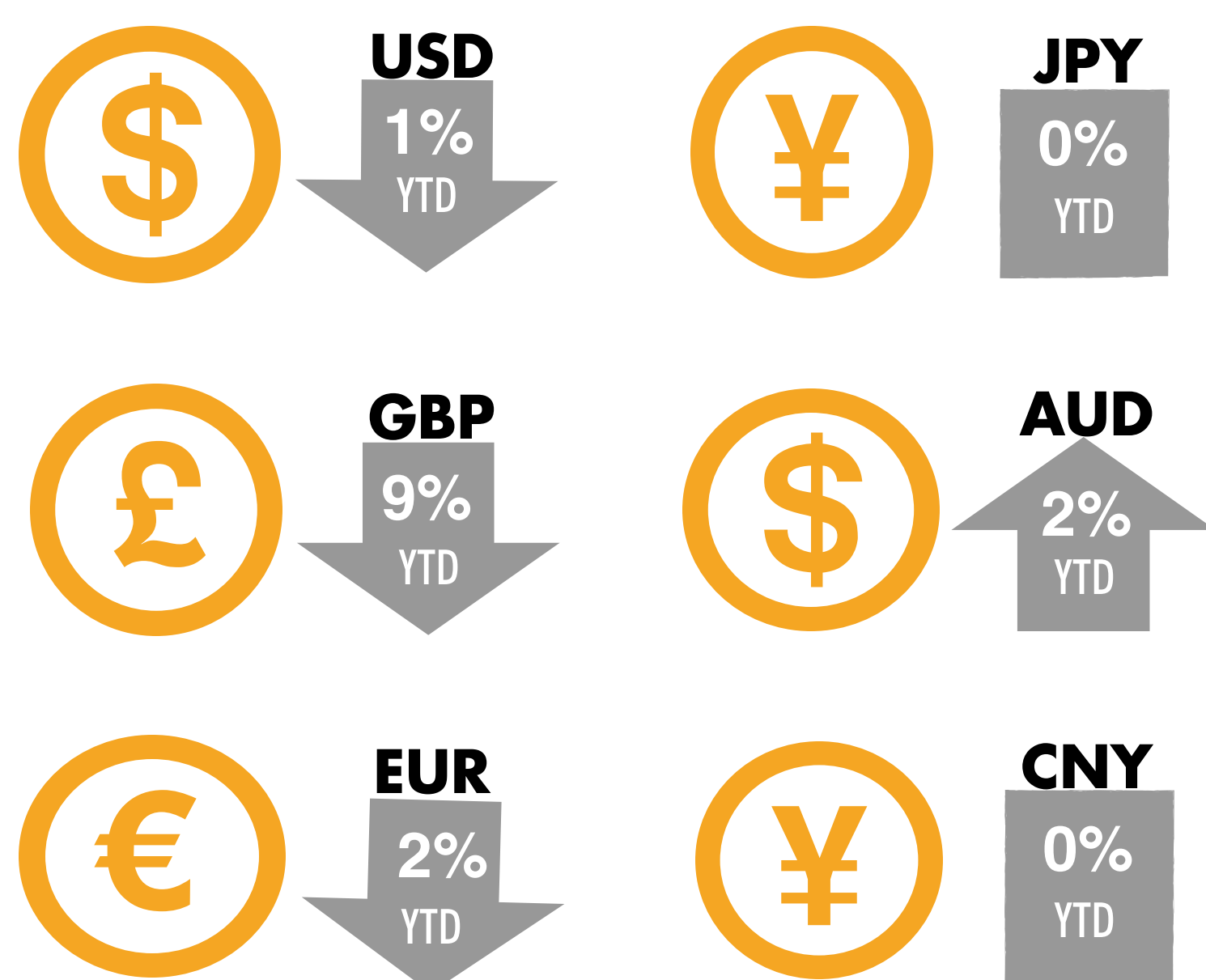
Same Day International Border Crossings (Into Yukon)



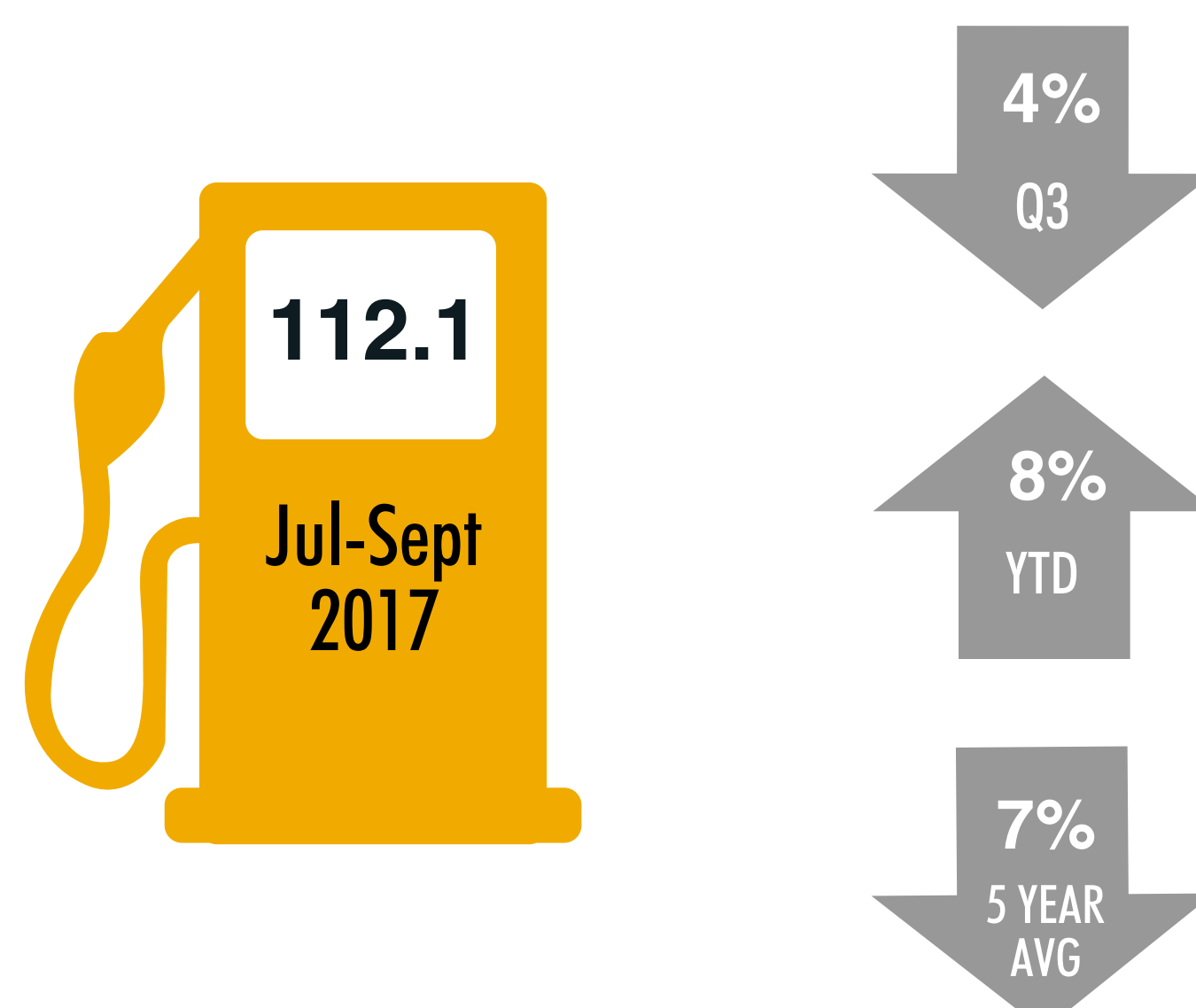
Retail Sales (Total \$000)



Exchange Rates (For CAD)



Average cost per litre of regular self-serve gasoline in Whitehorse



Consumer Confidence in Canada



YEAR-TO-DATE VS. 5 YEAR AVERAGE

International Overnight Visitation (1+ Nights)

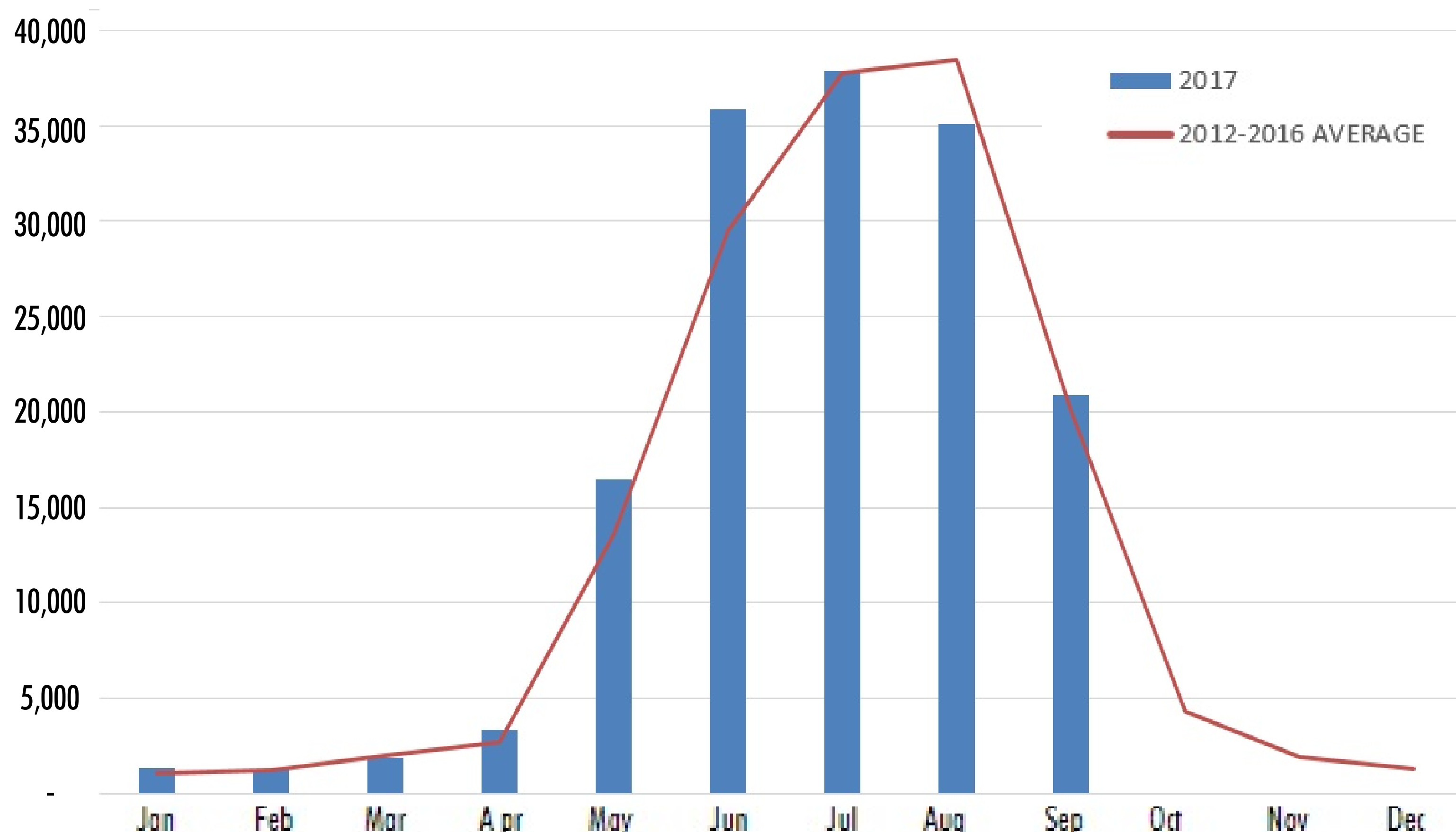
Year-to-date (YTD) overnight visitation for international visitors is 3% higher with 4,600 more visitors than the same period in 2016.

The month of September saw a 4% increase in overnight visitation compared to the 5 year average and a 6% increase compared to September 2016.

YTD overnight visitations in 5% higher than the 5 year average (2012-2016).

Source: Statistics Canada, CANSIM 427-0004.

American and Overseas visitors only, no Canadian visitors are included.



Air Arrivals at Erik Neilson Whitehorse International Airport

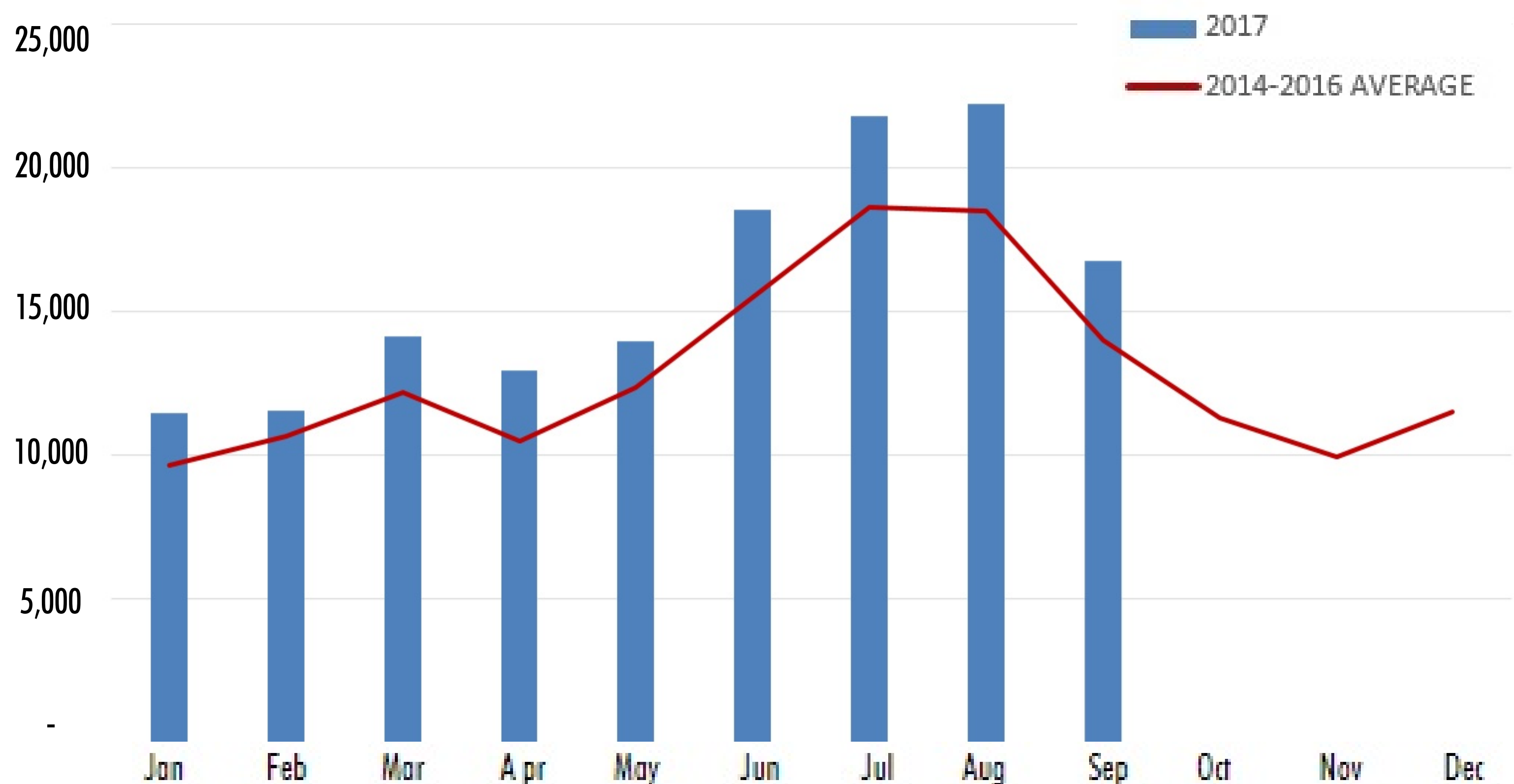
Year to date air arrivals have grown by 7% or 9,800 more passengers than the same period in 2016.

Over the last 5 years, air arrivals have grown by 24% or 27,500 more passengers than in the same period in 2013.

YTD air arrivals are 18% higher than the 5 year average (2012-2016).

Source: Government of Yukon, HPW.

Includes business, pleasure and local air passenger arrivals.



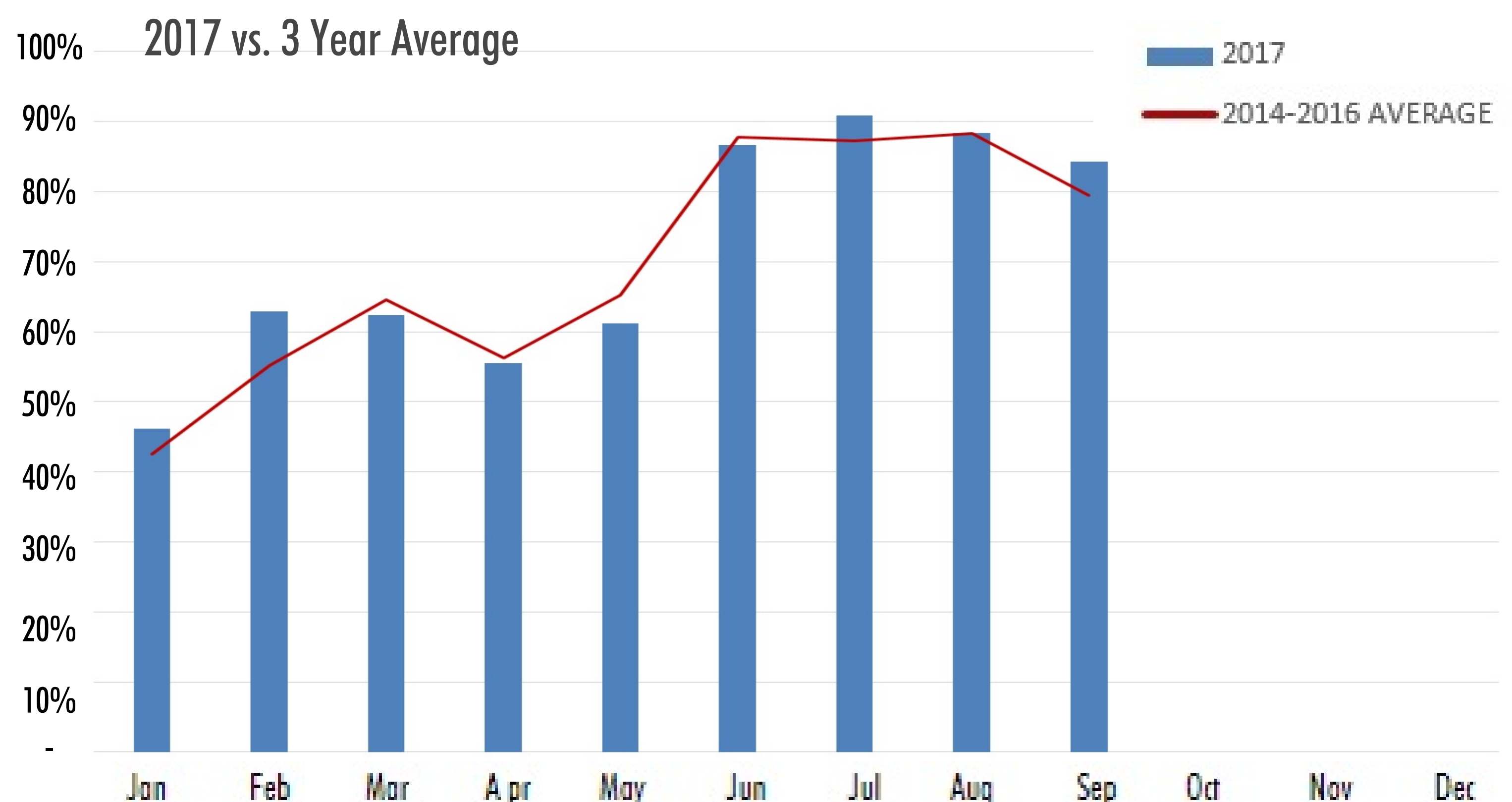
Occupancy at Select Fixed Roof Accommodation

YTD occupancy is 1.3 points higher than the 3 year average* (2014-2016).

YTD Yukon occupancy rates are 3.7 points higher than national rates (67.2%).

Source: Canadian Tourism Research Institute, Hotels Trends in the Hotel Industry National Market Report; YBS, Monthly Statistics Review.

Figures represent approximately 500 rooms in Yukon and should not be generalized to the whole accommodation market. Figures are presented as an indicator only. *2012-2013 data unavailable.



YUKON TOURISM VISITATION REPORT

JAN - JUN 2017

International Border Crossings (Into Yukon)

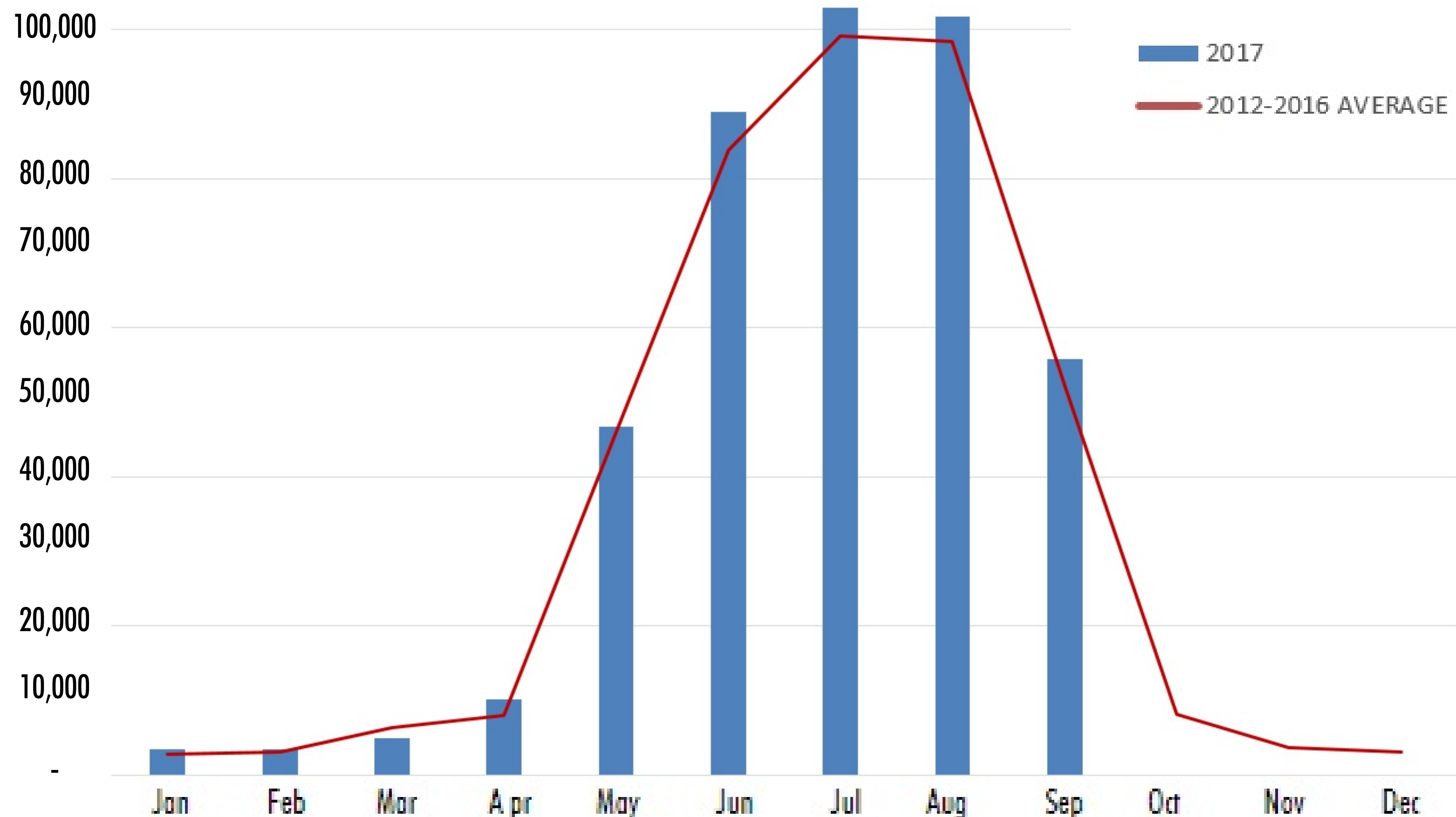
YTD border crossings are 4% higher than in 2016.

The month of September saw a 7% increase in border crossings compared to the 5 year average and a 13% increase compared to September 2016.

YTD crossings through Canadian Border Services Agency ports of entry are 5% higher than the 5 year average (2012-2016).

Source: Statistics Canada, CANSIM 427-0001.

Excludes travellers entering Yukon via BC on the South Alaska or Stewart-Cassiar Highways, the NWT on the Dempster Highway or on domestic flights. Total includes Yukonners.



Same Day International Border Crossings (Into Yukon)

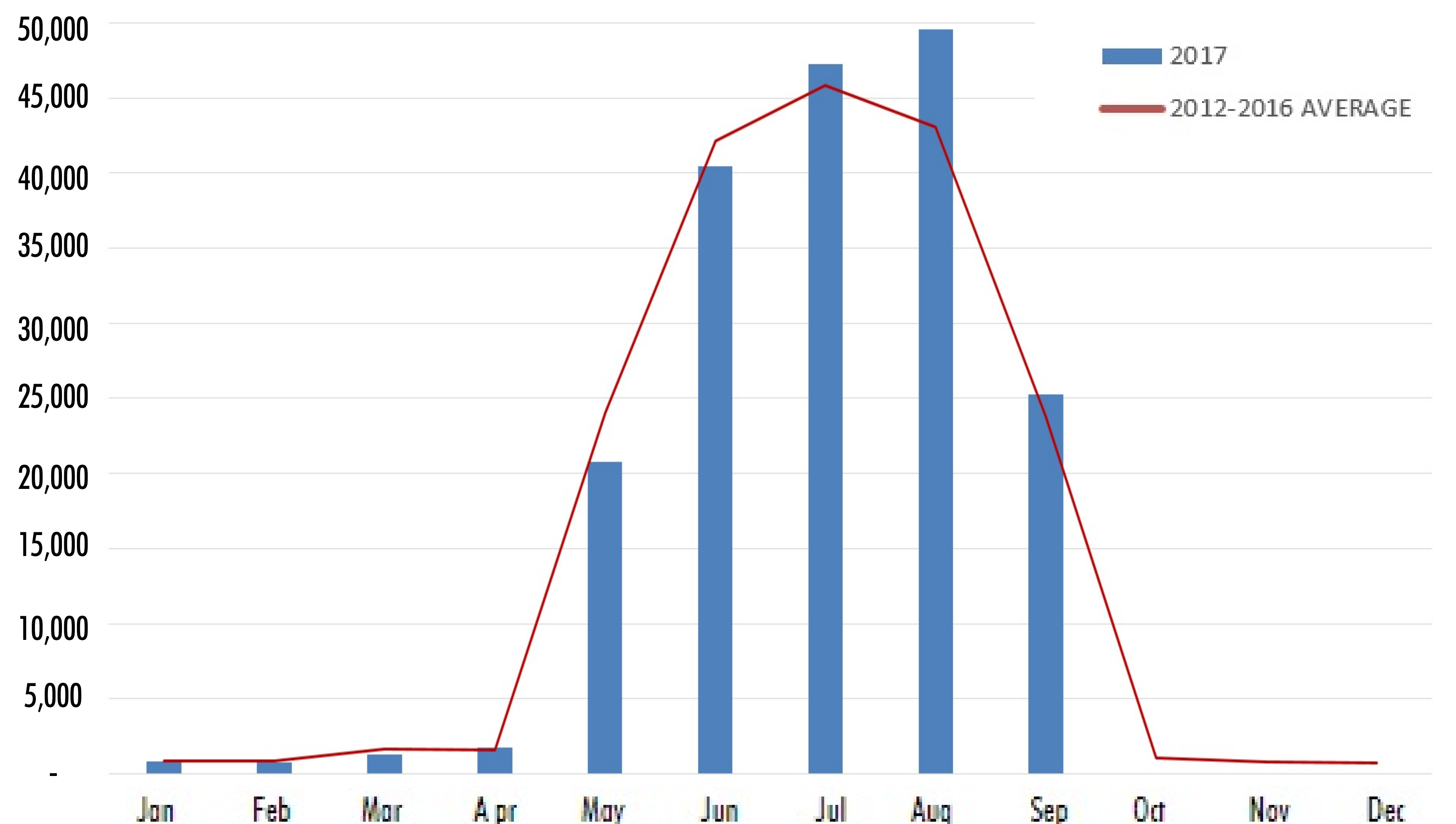
YTD same day border crossings are 7% higher than 2016.

The month of August saw a 15% increase in same day border crossings compared to the 5 year average and a 21% increase compared to August 2016.

YTD same day border crossings are 2% higher than the 5 year average.

Source: Statistics Canada, CANSIM 427-0001.

Excludes travellers entering Yukon via BC on the South Alaska or Stewart-Cassiar Highways, the NWT on the Dempster Highway or on domestic flights.



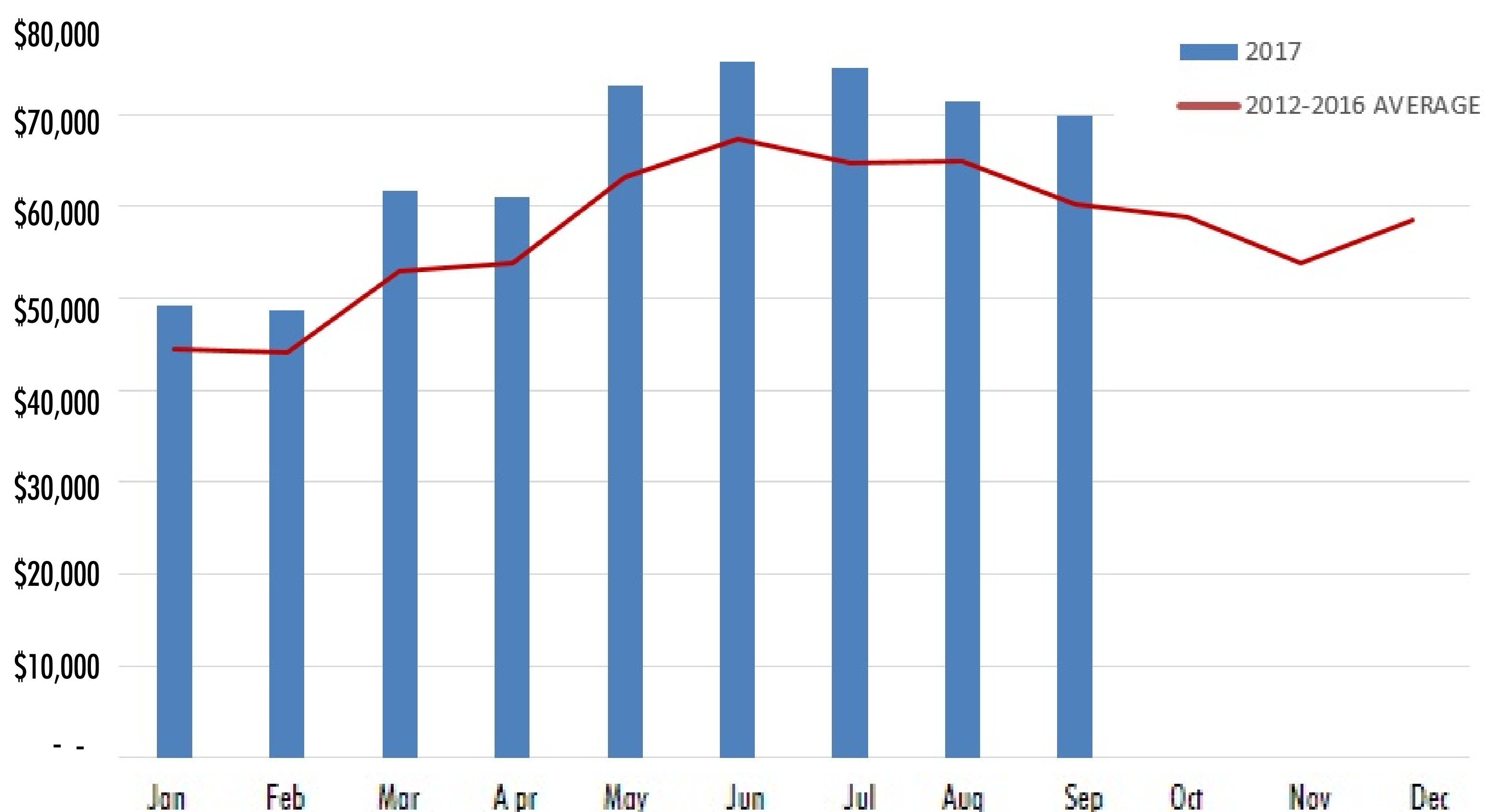
Retail Sales (Total Sales \$000)

YTD retail sales are up 5% (\$26 million) from the same period in 2016.

YTD retail sales are up 14% compared to the 5 year average (2012-2016).

Comparatively, national retail sales have increased 7% YTD.

Source: Statistics Canada, CANSIM 080-0020.



2017 YEAR-TO-DATE

Year-to-date (YTD)		JAN	FEB	MAR	APR	MAY	JUN	JUL	AUG	SEP	OCT	NOV	DEC			
% YOY* Change		2017	% YOY Change	2017	% YOY Change	2017	% YOY Change	2017	% YOY Change	2017	% YOY Change	2017	% YOY Change			
OVERNIGHT VISITATION, by Origin ^{1a}																
Total	154,169	3%	1,369	-2%	1,412	-9%	1,911	-24%	3,366	14%	16,502	1%	35,888	-1%	20,903	6%
US	134,153	3%	1,304	-3%	1,193	-11%	1,765	-25%	3,191	16%	15,348	1%	31,650	-3%	17,818	5%
Overseas	20,016	4%	44	63%	92	33%	146	-5%	175	-9%	1,154	0%	4,238	12%	3,085	11%
AIR ARRIVALS AT ERIK NEILSON WHITEHORSE INTERNATIONAL AIRPORT ²																
Arrivals	143,327	7%	11,461	15%	11,532	-6%	14,135	-2%	12,924	18%	13,934	1%	18,549	7%	16,756	14%
OCCUPANCY AT SELECT FIXED ROOF ACCOMMODATIONS ³																
Occupancy	70.9%	2.0	46.2%	3.6	62.9%	20.5	62.4%	0.0	55.5%	-1.8	61.2%	-4.2	86.7%	-4.3	88.4%	-1.5
INTERNATIONAL BORDER CROSSINGS (INTO YUKON) ⁴																
Total	418,423	4%	3,407	-6%	3,413	-4%	5,014	-30%	10,211	33%	46,780	-2%	88,967	2%	101,836	3%
US	295,765	2%	2,102	-16%	1,964	-17%	3,017	-20%	4,852	5%	31,145	-4%	66,282	0%	73,652	0%
CAN	76,868	13%	1,251	15%	1,351	22%	1,821	-43%	5,081	80%	9,535	2%	12,601	6%	17,142	19%
Other	46,295	6%	54	86%	98	29%	176	-18%	278	11%	6,100	3%	10,038	10%	11,042	-3%
SAME DAY INTERNATIONAL BORDER CROSSINGS (INTO YUKON) ⁵																
Total	187,871	7%	808	-30%	776 ²	-26%	1,263 ²	-17%	1,764	-8%	20,743	-6%	40,432	4%	49,573	21%
RETAIL SALES (\$000) ⁶																
Total	\$586,145	5%	\$49,169	2%	\$48,701	0%	\$61,750 ²	9%	\$61,020	0%	\$73,195	8%	\$75,783 ²	7%	\$71,489	-3%

*YOY = Year-over-year variance. For Quarter 3, YTD is comparing (Q1+Q2+Q3) 2017 to (Q1+Q2+Q3) 2016. Monthly data is comparing 2016 to 2017 (e.g. Jan 2016 to Jan 2017).

¹ Source: Statistics Canada, CANSIM 427-0004. Excludes Candian visitors. ² Source: Government of Yukon, HPW. Includes local air passenger arrivals. ³ Source: Canadian Tourism Research Institute. Figures represent approx. 500 rooms in Yukon only. ^{4/5} Source: Statistics Canada, CANSIM 427-0001. Excludes travellers entering Yukon via BC by land, the NWT by land or domestic flights. ⁶ Source: Statistics Canada, CANSIM 080-0020. ² Adjusted, September 2017.